



# HSL-3 PAX EXPANSION ANCHOR

**Technical Datasheet**

**Update: Dec-20**



# HSL-3 PAX

## Ultimate-performance heavy-duty anchor

### Anchor versions



HSL-3 PAX85  
(M10)

### Benefits

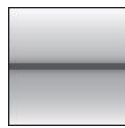
- High loading capacity
- Suitable for uncracked hollow core slabs with concrete class  $\geq$  C50/60

### Base material



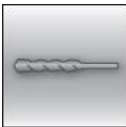
Concrete  
(uncracked)

### Load conditions



Static/  
quasi-static

### Installation conditions



Hammer  
drilled holes

### Basic loading data (for a single anchor): HSL-3 M10 PAX85

#### All data on this page applies to:

- Hollow concrete slabs VBI A200,  $f_{cc} \geq 60 \text{ N/mm}^2$
- Correct setting according to manufacturer's IFU
- No influence of edge and spacing,  $c \geq c_{\min}$ ,  $s \geq s_{\min}$  (for Tension resistance)
- No influence of edge and spacing,  $c \geq 10 \cdot h_{ef}$ ,  $s \geq 3 \cdot c$  (for Shear resistance)

#### Effective embedment depth

Anchor size			M10
Effective embedment depth	$h_{ef}$	[mm]	$\geq 35$

#### Characteristic resistance

Anchor size			M10
Uncracked pre-stressed hollow core slabs (VBI A200)			Concrete class $\geq$ C50/60
Tension $N_{Rk,p}$	HSL-3 PAX85	[kN]	12,6
Shear $V_{Rk,s}$	HSL-3 PAX85	[kN]	20

### Design resistance

Anchor size			M10
Uncracked pre-stressed hollow core slabs (VBI A200)			Concrete class $\geq$ C50/60
Tension $N_{Rd,p}$	HSL-3 PAX85	[kN]	8,4
Shear $V_{Rd,s}$	HSL-3 PAX85	[kN]	13,3

### Recommended resistance

Anchor size			M10
Uncracked pre-stressed hollow core slabs (VBI A200)			Concrete class $\geq$ C50/60
Tension $N_{rec}$	HSL-3 PAX85	[kN]	6,0
Shear $V_{rec}$	HSL-3 PAX85	[kN]	9,5

### Materials

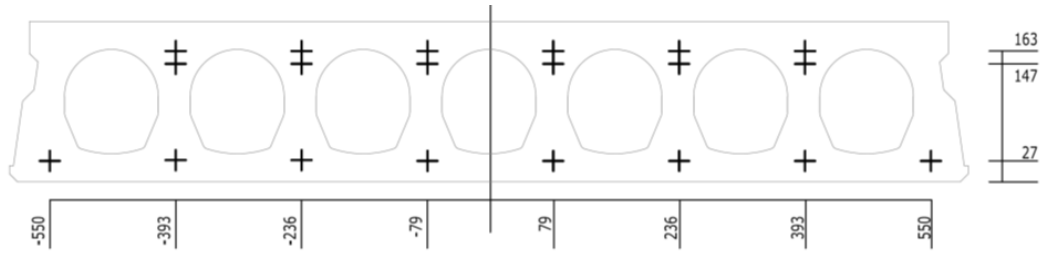
#### Material quality

Part	Material
HSL-3 M10 PAX85	Grade 8.8 acc. DIN EN ISO 898-1 galvanised to min. 5 microns

### Setting information

#### Setting details / parameters for HSL-3 PAX85

Anchor size			M10
Concrete flange thickness	$d_b$	[mm]	$35 \leq d_b \leq 40$
Installation torque	$T_{inst}$	[Nm]	35
Minimum spacing	$s_{min}$	[mm]	200
Minimum edge distance	$c_{min}$	[mm]	100



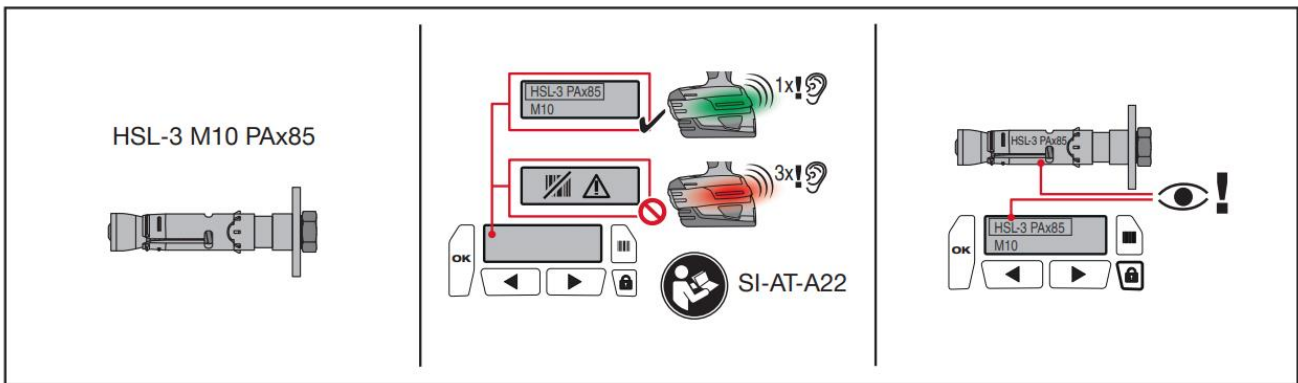
### Installation equipment

Anchor size	M10
Rotary hammer	TE 2; TE 7-C; TE 6-A22/36 DRS
Setting tool	Hilti SIW 6AT 22A – SI-AT-A22
Other tools	Drill bit diameter 15 mm, hammer, torque wrench

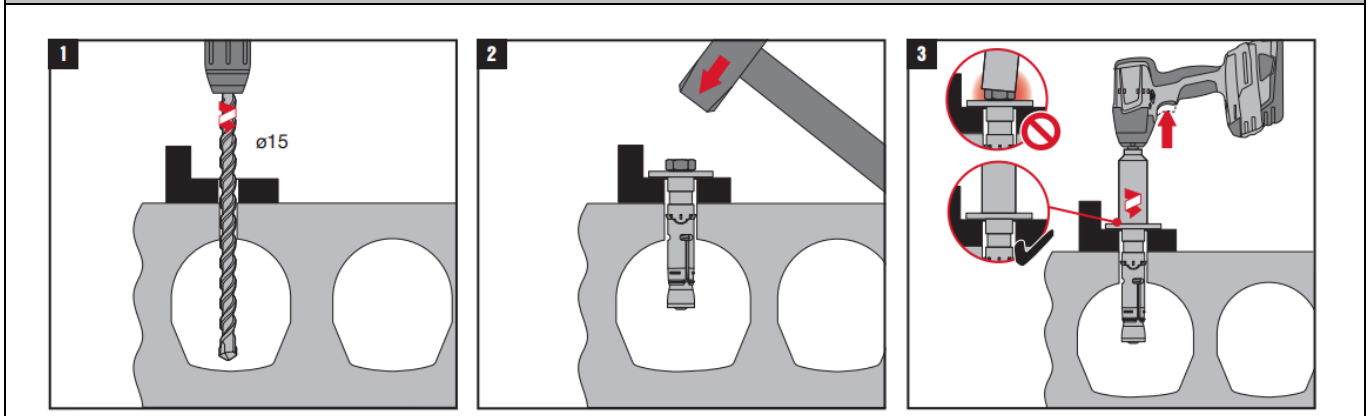
### Setting instructions

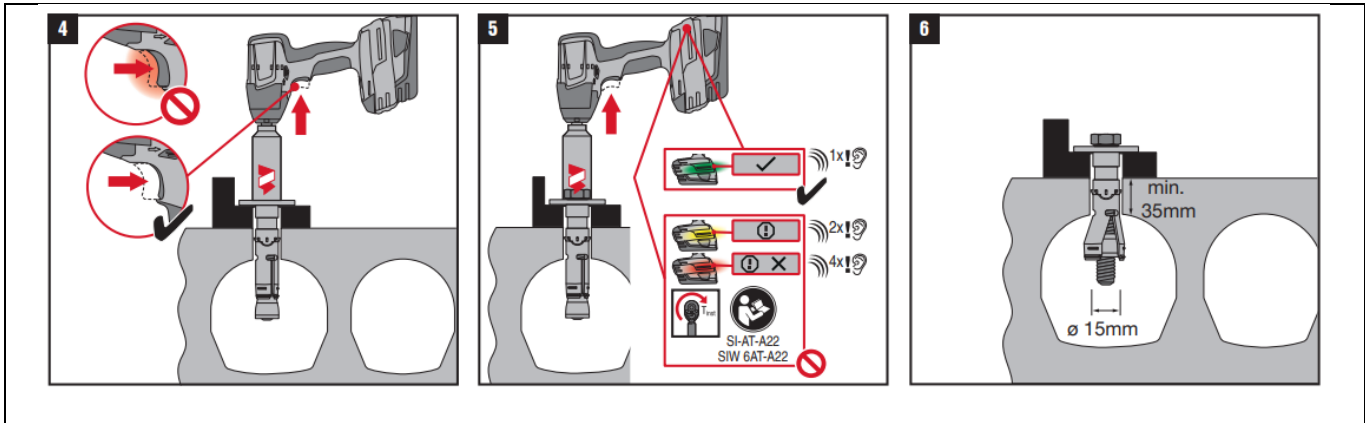
\*For detailed information on installation of HSL-3 M10 PAX85 see instruction for use given with the package of the product.

#### Setting instruction



#### Setting





**Removal**

