



# MP-L-I

Pipe clamp MP-L-I for pipe support



# MP-L-I

## PIPE CLAMP MP-L-I

### Applications

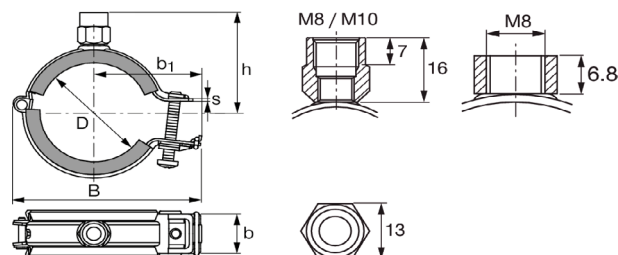
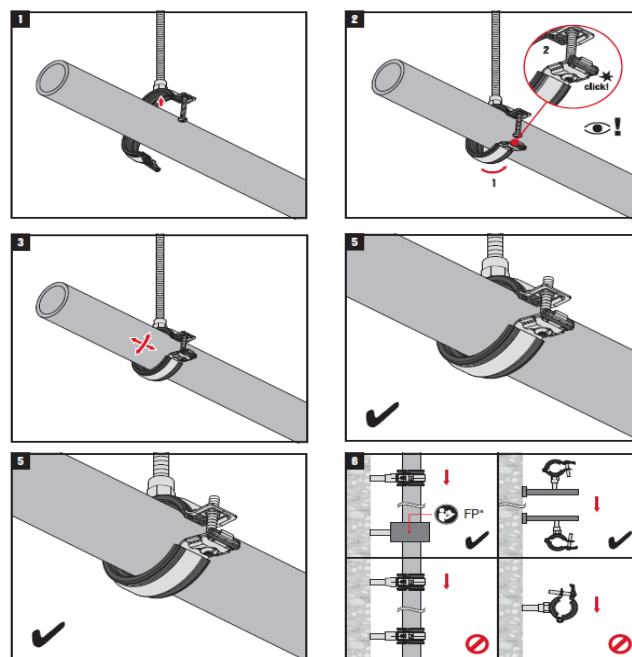
- Light-duty pipe installations up to Ø170 (6")
- Fastening pipes for fresh water, heating and waste water in residential and industrial buildings
- Suitable for ceiling, floor and wall applications
- For sanitary and heating applications with pipes of various materials
- Pipe clamp for use in dry interiors

### Advantages

- Significant installation time savings compared to two-screw pipe clamps
- Secured hinge with wide, infinitely adjustable opening angle
- Clamping range without gaps across the entire pipe clamp series
- One-screw safety flap closure - easy single-handed closing and re-opening
- Unique safety flap closure mechanism prevents unintentional re-opening
- Less tiring to install - simpler pipe adjustment and more reliable closure

### Technical data

- Material composition: DC01 - DIN EN 10130
- Surface finish: Galvanized
- Temperature resistance: -40°C to 110°C
- Hardness Insulation Material: 60° ± 5° Shore A
- Noise reduction: 18,5 dB (A)
- Insulation material : EPDM Rubber



## INFORMATION TABLE

Designation	Clamping range	Width	Cross section width and thickness (b x s)	Distance center pipe to top - h	Sales pack quantity	Item number
MP-L-I 10-14 M8	10 - 14 mm	46 mm	20 x 0,8 mm	29 mm	50 pc	2179331
MP-L-I 15-20 M8	15 - 20 mm	51 mm	20 x 0,8 mm	31 mm	50 pc	2179332
MP-L-I 20-26 M8	20 - 26 mm	56 mm	20 x 0,8 mm	34 mm	50 pc	2179333
MP-L-I 26-32 M8	26 - 32 mm	64 mm	20 x 0,8 mm	38 mm	50 pc	2179334
MP-L-I 32-38 M8	32 - 38 mm	71 mm	20 x 0,8 mm	41 mm	50 pc	2179335
MP-L-I 38-45 M8	38 - 45 mm	78 mm	20 x 0,8 mm	45 mm	50 pc	2179336
MP-L-I 45-53 M8	45 - 53 mm	88 mm	20 x 1,2 mm	50 mm	50 pc	2179337
MP-L-I 53-63 M8	53 - 63 mm	98 mm	20 x 1,2 mm	55 mm	50 pc	2179338
MP-L-I 10-14 M8/M10	10 - 14 mm	46 mm	20 x 0,8 mm	32 mm	50 pc	2172815
MP-L-I 15-20 M8/M10	15 - 20 mm	51 mm	20 x 0,8 mm	32 mm	50 pc	2172816
MP-L-I 20-26 M8/M10	20 - 26 mm	56 mm	20 x 0,8 mm	36 mm	50 pc	2172817
MP-L-I 26-32 M8/M10	26 - 32 mm	64 mm	20 x 0,8 mm	39 mm	50 pc	2172818
MP-L-I 32-38 M8/M10	32 - 38 mm	71 mm	20 x 0,8 mm	42 mm	50 pc	2172819
MP-L-I 38-45 M8/M10	38 - 45 mm	78 mm	20 x 0,8 mm	45 mm	50 pc	2172920
MP-L-I 45-53 M8/M10	45 - 53 mm	88 mm	20 x 1,2 mm	51 mm	50 pc	2172921
MP-L-I 54-63 M8/M10	54 - 63 mm	98 mm	20 x 1,2 mm	56 mm	50 pc	2172922
MP-L-I 63-72 M8/M10	63 - 72 mm	108 mm	20 x 1,2 mm	60 mm	25 pc	2172923
MP-L-I 73-82 M8/M10	73 - 82 mm	118 mm	20 x 1,2 mm	65 mm	25 pc	2172924
MP-L-I 83-92 M8/M10	83 - 92 mm	128mm	20 x 1,2 mm	70 mm	25 pc	2172925
MP-L-I 93-103 M8/M10	93 - 103 mm	138 mm	20 x 1,2 mm	76 mm	25 pc	2172926
MP-L-I 104-114 M8/M10	104 - 114 mm	149 mm	20 x 1,2 mm	81 mm	25 pc	2172927
MP-L-I 115-128 M8/M10	115 - 128 mm	165 mm	25 x 1,5 mm	90 mm	10 pc	2172928
MP-L-I 129-142 M8/M10	129 - 142 mm	179 mm	25 x 1,5 mm	97 mm	10 pc	2172929
MP-L-I 143-156 M8/M10	143 - 156 mm	193 mm	25 x 1,5 mm	104 mm	10 pc	2172930
MP-L-I 157-170 M8/M10	157 - 170 mm	207 mm	25 x 1,5 mm	111 mm	10 pc	2172931