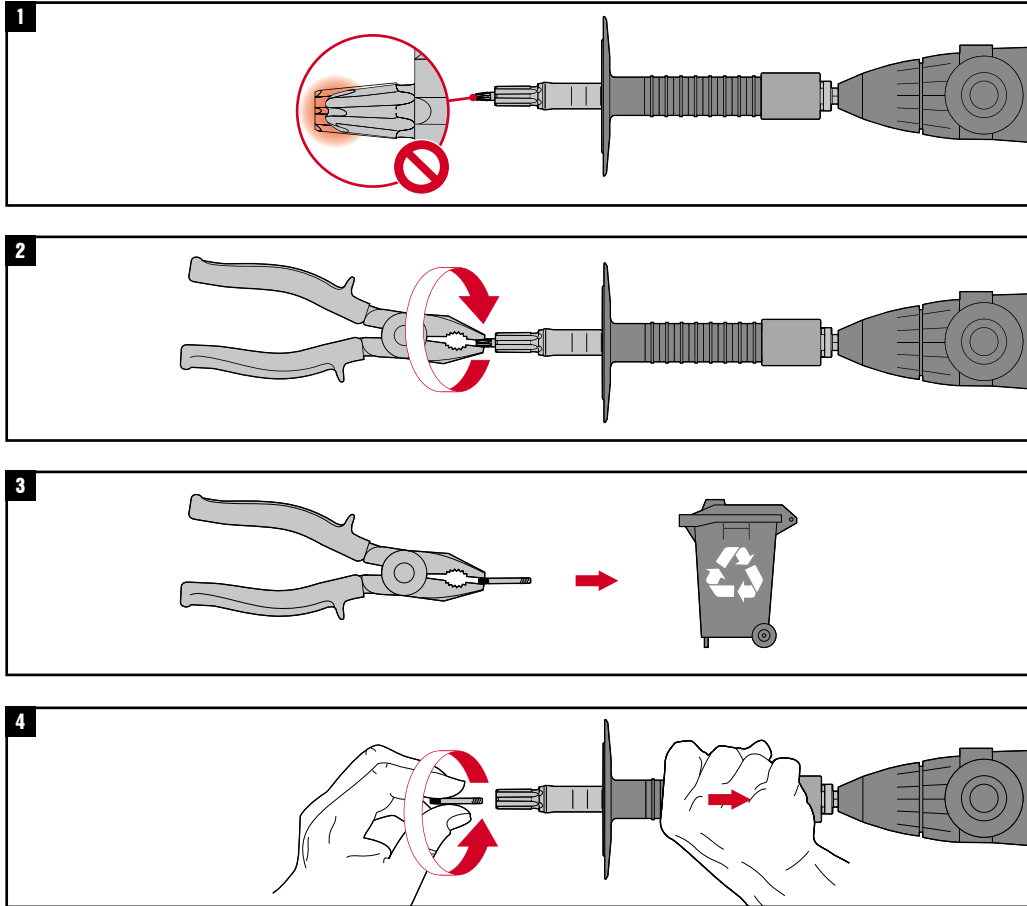


# D 8-SW 1/2



# D 8-FV

402375-V2-12.2010

	A	B	C	D	E
D 8-FV 125	0...20 mm	$l_b$			
D 8-FV 155	20...50 mm	$l_b$		0...20 mm	$l_b$
D 8-FV 215	50...110 mm	$l_b$		20...80 mm	$l_b$

$l_b$	SW1	SW2
100 ... 200 mm	✓	✗
200 ... 360 mm	✗	✓

**2.A**

**D 8-SW 1**

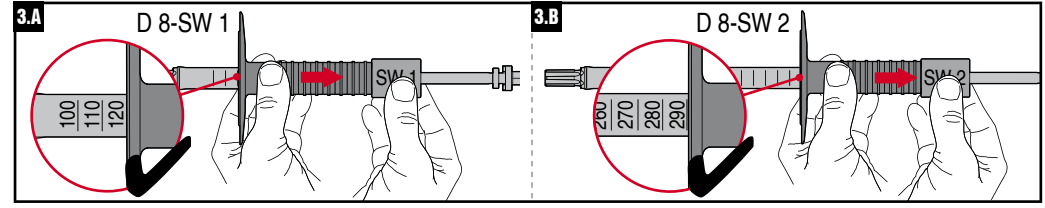
0	200 mm
1	190 mm
2	180 mm
3	170 mm
4	160 mm
5	150 mm
6	140 mm
7	130 mm
8	120 mm
9	110 mm
10	100 mm

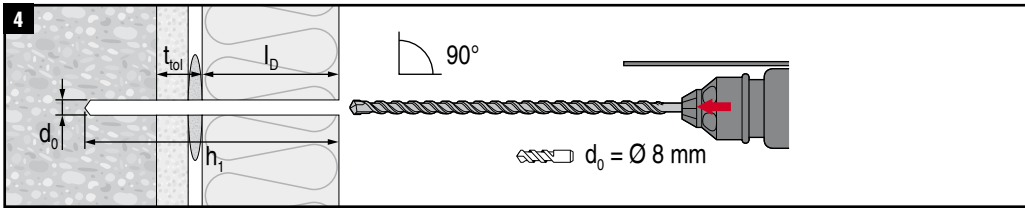
---

**2.B**

**D 8-SW 2**

0	360 mm
1	350 mm
2	340 mm
3	330 mm
4	320 mm
5	310 mm
6	300 mm
7	290 mm
8	280 mm
9	270 mm
10	260 mm
11	250 mm
12	240 mm
13	230 mm
14	220 mm
15	210 mm
16	200 mm





**4.1**

		<b>A</b>	<b>B</b>	<b>C</b>	<b>D</b>	<b>E</b>
	$h_1$	≠T	≠T	≠T	≠T	≠T
D8-FV 125	$l_D + 65 \text{ mm}$	✓	✓	✓	✗	✗
D8-FV 155	$l_D + 95 \text{ mm}$	✓	✓	✓	✓	✓
D8-FV 215	$l_D + 155 \text{ mm}$	✓	✓	$t_{tot} 80 \dots 110 \text{ mm}$	✓	✓

